

# CRAFT DESIGN MONTH MAY 2012

If we don't want all of our hard work from this year to be wasted, it's really important to ensure we all plan ahead to make next year's campaign even more successful and, with Christmas just around the corner, there's no time like the present!

Our **November/December issue** had a couple of real success stories from this year so, if you're stuck for inspiration make sure you have a good read.

Collaborating with others is always a great idea to get more of an impact. You'll all benefit from each others' databases when promoting and, if it's an unusual event, there's a great chance that your local newspaper/radio or even TV station will give you a strong mention.

There are logos and free downloads on our website [www.craftanddesignmonth.net](http://www.craftanddesignmonth.net) for you to use in your 2012 campaign. Hopefully you'll find them useful.

Good luck with your planning and don't forget to keep us up-to-date with what you're doing.

# NEWSLETTER

November 2011 [www.craftanddesign.net](http://www.craftanddesign.net)

craft&design

Don't forget our calendars and wallplanners make great Christmas presents are available at just £5 each.



Order a subscription to craft&design now and get a FREE 2012 **Calendar** and **Wallplanner**  
(Offer valid whilst in stock)

## Selected Awards 2012

The 2011 craft&design Selected Award Winners all feature on our 2012 calendar as those of you who received the September/October issue of the magazine in the post will no doubt have spotted. However, whilst the stunning images may well keep you motivated throughout the New Year, it also means that voting for 2012 can't be far off.

Votes can be given to any of the work that features on our online **Selected gallery**. The only way makers can get listed now is by being recommended - and that will need to happen quickly if they are going to be in the running for next year's prizes. Our web guru Mike Ball explains how it all works.

"**craft&design Selected** has grown noticeably in the last year - there are now more than 1,000 makers promoting their work through the site, and we've had some very positive feedback from makers commenting on business that has come to them via Selected, not to mention positive responses from people using the site to find makers."

"We've recently changed the process by which applications for new entries are considered. We now ask for recommendations for makers rather than applications. However, during the voting period of the 2012 craft&design Selected Awards, from **1st January 2012 until 31st March**, we will not be accepting recommendations."

"Our staff will have their hands full monitoring the voting process and answering queries about the awards... so if there's someone who you would like to recommend for consideration for craft&design Selected, now's the time to say!"

You can recommend a maker, before 12th December 2011 at [www.craftanddesign.net/selected/recommendations](http://www.craftanddesign.net/selected/recommendations)



## British Jewellers' Association update website

The BJA website [www.bja.org.uk](http://www.bja.org.uk) has been updated with a wealth of information both from within the industry and for members only.



## Sheffield's Designer Craft Showcase Celebrates 10th Year

Christmas Crackers returns to the Millennium Gallery for the festive season and celebrates its 10th year. The event will host work from over 90 of the UK's most sought-after makers, featuring new designs from rising talents alongside firm favourites from Britain's leading craftspeople. Rowena Hamilton, Exhibition Curator – Craft & Design at Museums Sheffield says: 'As well as providing a great opportunity to pick up a truly unique Christmas gift, Christmas Crackers raises funds that make a vital contribution to Museums Sheffield's work and supports independent craftspeople both locally and throughout the UK. It's fantastic to celebrate Christmas Crackers' 10th year and we're delighted to be showcasing some wonderfully original work.' Christmas Crackers continues at the Millennium Gallery until 8 January 2012 – entry is free. A selection of work on sale in Christmas Crackers will also be available through [Museums Sheffield's online shop](#)



Charlotte Tollyfield, Square Pot-pourri Bowl.  
Image © Keith Leighton

## Great Northern Contemporary Craft Fair Wins At Tourism Awards

It's been a good year for the Great Northern Contemporary Craft Fair (GNCCF) which held its 4th event from 20th to 23rd October at Quay House, Spinningfields, Manchester. Despite having to contend with all the implications of the Manchester Derby taking place on the Sunday, visitor levels held steady reaching just under 6,000 over the three days.



Yu-Ping Lin at GNCCF 2011

The achievements of the show's organisers: Angela Mann and Ann-Marie Franey were recognised at this year's prestigious Manchester Tourism Awards. Held in September, the show won the Small Tourism Event of the Year category, having already received a Highly Commended award in 2010.

Commenting on the win, Ann-Marie Franey says: "We were up against some tough competition in the Small Tourism Event category so it came as a complete surprise to win. We are absolutely thrilled that the event has been recognised by Manchester's finest tourism figures – it is wonderful for the profile of the show."

And when asked about the ongoing success of the show, Ann-Marie explained that she takes the time to survey exhibitors and visitors to get a good overall picture of how it's being received.

"Something that came up regularly in our survey was affordability and visitors felt that the price range of items being sold ensured both ends of the price spectrum were met. That was good news for people still wanting to buy despite being on a tight budget."

Further information about the event can be found at: [www.greatnorthernevents.co.uk](http://www.greatnorthernevents.co.uk).

## Regional Artists Take to the Floor

East Midlands exclusive at **Ferrers Gallery**.

The Top Floor exhibition space at Ferrers Gallery in NW Leicestershire launches a series of short exhibitions by regional artists. Distinctive styles of work will be on show in these exclusive exhibitions but catch them whilst you can as they are not on for long! In fact you'll need to be quick to catch the first, Janet Mayo, as it finishes on 22nd November. Janet's paintings portray an emotional reaction to her surroundings using atmosphere, light and colour.

### **Mark Langley - 22nd November to 6th December**

Mark Langley works with a subtle combination of pencil and colour pencil that is distinctive and technically accomplished, his realistic yet empathetic style has been described as photo-realistic expressionism.



### **"Glimmer" by CCN - 6th to 23rd December**

The Contemporary Crafts Network (CCN) will be exhibiting a range of handmade designer Crafts for you at Christmas. Prices range from £5 to £500. The CCN is a network of craft makers who have formed a close knit group that together exhibit all over the east midlands and Europe.



## Design Museum Exhibition

**Terence Conran - The Way We Live Now**  
**16 November 2011 - 4 March 2012**

The Design Museum in London marks Sir Terence Conran's 80th birthday with a major exhibition that explores his unique impact on contemporary life in Britain. Through his own design work, and also through his entrepreneurial flair, Conran has transformed the look of the British home. He has established a design studio and an architectural practice with a worldwide reach. He was the founder of Habitat and a pioneer of the new restaurant culture driven by a passion for simplicity.

See [www.designmuseum.org](http://www.designmuseum.org) for further information.



# Jane Phillips Award

**To mentor, nurture and support the professional artistic growth of young, emerging artists across the Visual and Applied Arts.**

Laura Edmunds is the first successful recipient of the Jane Phillips Award 2011.

The Award was launched by Nathalie Camus (Senior Applied Arts Officer, Arts Council of Wales) at Mission Gallery on 5th August as a memorial to Jane Phillips (1957-2011) Million Gallery's first director.

The award is a legacy to Jane's passion for mentoring and nurturing talent, consistently supporting young, emerging artists across the Visual and Applied Arts. There was an outstanding response to the launch of the Award. The Art Auction held at the Welsh School of Architectural Glass, Swansea on 20th August raised an incredible £12,383 towards the **Jane Phillips Award** fund; owing its success to the support of artists from across Wales and beyond.

**Laura Edmunds** is a visual artist working predominantly in textiles. Her Award was £1,000 and six months residency at Swansea Studios which she took up on 1st November. She will also receive support and mentoring from professionals across the arts. Melina



Laura Edmunds, Impermanence

## UCA polishes off opposition at Pewter Awards

The University for the Creative Arts (UCA) came close to a clean sweep at the prestigious Pewter Live Awards earlier this year, which honour the country's top pewter designers and craftspeople. Nominees from UCA Rochester won two of the three student categories and also scooped two third-place prizes, while UCA Farnham took home a runners-up prize at Pewterers' Hall in London.

[www.pewterers.org.uk](http://www.pewterers.org.uk)

Third-year SGJ student, Richard Gamester, won the Decorative Arts category for a collection of pewter condiment pourers encased in Finnish soapstone



Melina Xenaki from UCA Farnham's 3D Design course was runner-up with her Picasso-inspired pewter chessboard table and set

## Merge Contemporary Christmas Craft Fair

Merge Contemporary Craft Fair will be showcasing the best of British Craft this Christmas with a fantastic 2-day show that will please all tastes.

Merge is the most inspiring craft fair you will find in the area with only the best of the best and takes place on 10th & 11th December, 10am - 4pm at The Great Hall, New Street, Oundle, Northamptonshire. A fantastic place to treat yourself to an original piece of art or buy an unusual one off Christmas gift.

All work is completely hand made by British makers, not manufactured, both locally and nationally. Buyers are able to meet the makers, and buy unique gifts, or commission an artist for their very own one off piece of work. Makers at Merge produce stand out statement pieces so come along and buy something out of the ordinary.

See [www.mergecontemporarycraftfairs.com](http://www.mergecontemporarycraftfairs.com) for further information.



Sylph Furniture, -Rhiannon Hankins



Ruth Lyne. Image Simon Bruntnell

There are all sorts of independently run courses that take place up and down the country. Here are a couple that have been brought to our attention to whet your appetite. More can be found at: [www.craftanddesign.net/events/](http://www.craftanddesign.net/events/)

## St Ives School of Painting and Leach Pottery set to run collaborative art course

Two centres of creativity in St Ives - The St Ives School of Painting and Leach Pottery - are collaborating to offer a unique 5-day course in November.

Leach Pottery was established more than 90 years ago by Bernard Leach. Today it is both a museum and working studio pottery, fast becoming recognized as the home of studio pottery in keeping with traditions established over 90 years ago.

The School of Painting, along with practising artists and fisherman who have been working alongside each other for over 70 years, occupies the historic Porthmeor studios on the other side of town.

This autumn the school's studio reopens after a multi-million pound renovation, which has saved these incredible studios from crumbling into the golden sands of adjacent Porthmeor beach.

When the St Ives School of Painting opened in April 1938 it was the fulfilment of a vow made by two young officers who had served in the trenches some twenty years earlier.

They promised themselves that if they survived the horrors of the Western Front, they would one day live and paint in St Ives. Both were trained and experienced artists: Borlase Smart studied under Julius Olsson RA at his School of Painting in the Porthmeor Studios in St Ives and Leonard Fuller was trained at The Royal Academy.

This five day course 'Still Life in Clay' will take students to both sites including time in residence at both locations.

The course runs from November 21st to 25th 2011 and costs £300 including all tuition and materials. You can book online [www.stivesartschool.co.uk/index.html](http://www.stivesartschool.co.uk/index.html) or contact the school office on Tel: +44(0)1736 797180, [info@stivesartschool.co.uk](mailto:info@stivesartschool.co.uk).



Image courtesy Leach Pottery and St Ives School of Painting  
Photo: Rebecca Peters

## International Line-Up at Warm Glass UK Masterclasses

Glass artists from around the world are set to descend upon Bristol as a new programme of masterclasses is announced by Warm Glass UK.

The leading glass art suppliers have planned six special five-day classes with esteemed international artists for 2012, with three already being sold out within days of their launch.

Based in Wrington, near Bristol, Warm Glass UK began running classes for aspiring artists in 2009, with popularity growing each year. Director of the company Pippa Bluck explains that this is the biggest year yet:

"We have just launched a programme of one-, two-, three- and five-day classes for 2012, with classes for everyone from complete beginners who fancy trying a new craft to more experienced glass artists who want to learn a new technique." For a full schedule of classes and masterclasses and for more information about Warm Glass UK visit [www.warm-glass.co.uk](http://www.warm-glass.co.uk)



Bob-Leatherbarrow



## Attention New Scam Warning

In the last newsletter we had a warning for you from ACID about an Expo-Guide. Here's another scam that's been brought to our attention by Paul Williams of South East Open Studios.

Here's how it works

1. You receive an email offering to buy your work.
2. You respond thinking it's a genuine offer.
3. After a few days, a cheque duly arrives but to your surprise, it's a cashier's cheque (payable over the counter) and made out for much more than the agreed sum to cover 'shipping' costs. This 'extra' amount may be as much as double the agreed price. You are asked to send the work to a particular shipping company, keep what is owed to you and pay the balance by Western Union. Well, you have cashed his cheque, so what's wrong with that?
4. What's wrong is the cheque was drawn on a foreign bank. Because there are no cross-border cheque clearing arrangements it can take up to eight weeks to clear. When the cheque eventually bounces, you are liable to repay the full amount to the bank.
5. There never was a shipping company, just the scammer collecting your money. As you sent it by Western Union he cannot be traced. He was only after your money. Your artwork is either trashed or sold for a nominal sum.

This scam can be aimed at almost anyone with something to sell, but artists are a particularly 'soft' target - we are not only keen to sell, we are also flattered when someone shows interest in our work. So how do you know when an email is a scam? We've reproduced Paul Williams' article in full on our blog. Click through for a read [www.craftanddesign.net/blog/](http://www.craftanddesign.net/blog/)

## 'Captured in Glass - Fact or Fiction?'

One man show of new work by Steffen Dam

Steffen Dam's first UK solo show takes place at **Browse & Darby**, 19 Cork Street, London W1S 3LP from 14th through to 26th November.

Dam re-imagines the natural world by creating extraordinary glass works, drawing inspiration from a variety of sources; observing flowers, bulbs and marine life. Having shown successfully in America and Europe, and gained a loyal following from COLLECT at the Saatchi Gallery, this is a landmark one man show for Steffen Dam. He has works in various collections including: Museum of Art and Design, New York (MAD), V&A, National Museum of Scotland, Royal Albert Memorial Museum & Art Gallery, Exeter and the National Museum, Oslo, Norway.



## Contemporary Applied Arts Christmas Exhibition

18 November 2011 - 7 January 2012

If you've yet to discover **Contemporary Applied Arts'** fascinating exhibition space and shop in London's West End, be sure to pay a visit in the run up to Christmas. For this year's Christmas Show, CAA invited all their members to participate in a collaborative seasonal selling show based on the theme of gifting. Each participant is asked to produce a series of five limited edition 'decorations', which should be representative of their work and retail at just £50.



## Tell your story and tell it well

**How to write (and talk) about your work in a compelling way.**

A new one-day workshop, run by Pete Mosley, Author of *Make Your Creativity Pay*

'Tell your Story' is an innovative workshop designed to help you capture the stories you need to tell to hold the attention of your audience and potential customers. Not everyone is a natural writer or teller of stories.

With less disposable income around people are more discriminating about what they buy. Recent research shows that the story of you and your work adds value and can be a clincher when it comes to making a sale. You owe it to yourself to send out the most compelling message about your work.

"As a creative person, you occupy the position of being one of the most interesting, absorbing and fascinating people on the planet. You need to tell your story, and tell it well..."

This workshop is for:

**Everyone who earns their living from their innate skills and creative talents.**

**It will help you:**

- Find your voice - tell your story as opposed to talking about yourself.
- Tell the stories of your work - what inspires and influences you and the beliefs and values that drive you.
- Make decisions about what parts of the story to tell, and what to leave out.
- Prepare text to use in your marketing materials.
- Decide on the right medium to use to tell your stories - face to face, the web, social media, or the printed page.

Using case studies, research examples, and his experience of working with a very wide range of practitioners, Pete will help you develop an individualised story and understand the techniques you need to use to tell it. This is not a 'one size fits all' solution. You will come away with a great deal of clarity about what it is you need to say and how and where to say it.

'Tell your Story' is designed for a small group (max. 8), and is run in the tutor's home in Loughborough, Leicestershire – a friendly, spacious, non-corporate thinking environment.

The day includes - taught input, participatory exercises, and a work pack/personal story planner. Plus, a delicious lunch & refreshments and a complimentary copy of 'Make Your Creativity Pay'.

Dates: 7th December or 18th January, 10am – 4pm

If you want to find out more Pete is happy to answer your questions, just get in touch.

**About the Tutor** Pete Mosley has been a business coach and mentor for 25 years, designing training events, seminars and personal development programmes, he writes for and advises the readers of craft&design magazine in his capacity as Business Editor. His experience of working with creative business, and writing and blogging about them, puts him in a unique position to deliver this course. He understands what makes creative individuals and their businesses tick.

Find out more on his [eventbrite Organiser Page](#)

HOW TO EARN YOUR LIVING FROM THE THINGS YOU LOVE TO DO

## MAKE YOUR CREATIVITY PAY

BY PETE MOSLEY

"Pete is the clearest thinker I know and the successful direction of my business is all down to him. His advice is worth its weight in gold and a whole book of the stuff is a treasure trove of positivity"

Rob Glass - Film maker.

"This has to be the book of the century for all you creative types out there. Enjoy!"

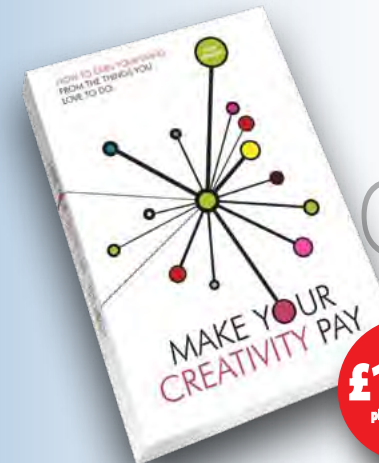
Rachael Stanleik - New Lifestyle Coaching

"Well guys, having been the privileged recipient of the e-book, I can tell you it's a great read! I am ordering 11 copies for my cohort of young artists on our leadership development programme, as I think it will give them everything they need to think about how they can make a living out of their talent. Go on, buy a copy - it could be the best thing you ever do!"

Helen - Oxford Youth Arts Partnership

"I have perused your book and happy to recommend it to all our emerging artists and makers here. Good luck with your promotion"

Mir Jansen - Yorkshire Artspace



**£11.99**  
plus £1.25 p&p  
uk only

Pete's inspirational new book is published by craft&design magazine. Order your copy online now at [www.craftanddesign.net/book](http://www.craftanddesign.net/book) or call 01377 255213 with your credit/debit card details, or send a cheque made payable to PSB Design & Print Consultants Ltd to: craft&design, 'Make Your Creativity Pay', PO Box 5, Driffield YO25 8JD. Also available as a pdf download at just £5.25

[www.craftanddesign.net/books/pete-mosley/make-your-creativity-pay/](http://www.craftanddesign.net/books/pete-mosley/make-your-creativity-pay/)

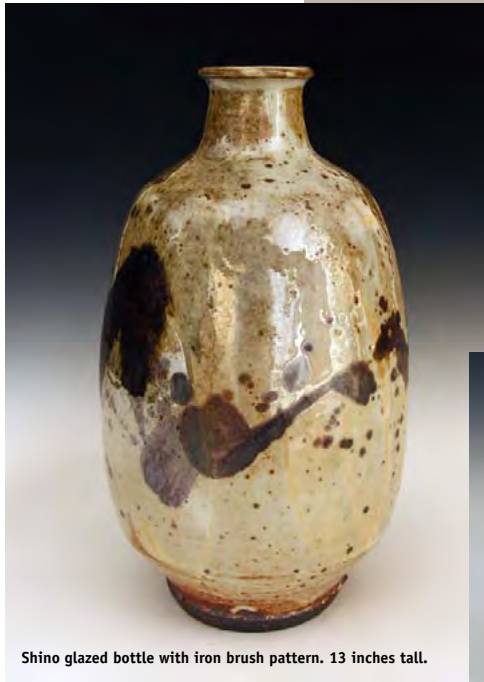
[www.craftanddesign.net](http://www.craftanddesign.net)

## Marston Pottery back to production

"I have been back in my workshop for one month and much of that time has been taken up with putting the place into some kind of order. However, I did glaze and pack almost 200 pieces into the two chamber wood kiln last week. It was a good firing and the pots were well received at the Oxford Ceramics Fair. On the 26th and 27th of November I will be having my Christmas Sale weekend and the display of discounted pots will be on view through December until Christmas. I have made some changes to my website too... a new page for a series of themed on-line exhibitions has appeared and the current show is of **20 Chawan**. December will see a show of carefully selected Yunomi in time for Christmas".

**"A very happy and peaceful holiday to everyone"**

**Phil Rogers,**  
Marston Pottery, Lower Cefnfaes,  
RHAYADER, Powys. LD6 5LT  
Tel. 01597 810 875 or  
07786 196 156



Shino glazed bottle with iron brush pattern. 13 inches tall.



Shino glazed lidded jar. 5 inches tall.

## Winter Open Studio Art Show at Wimbledon Art Studios

Thursday 24th - Sunday 27th November 2011

On Thursday 24th November the artists of Wimbledon Art Studios open their studio doors to the public for the second of their twice-yearly Open Studio art shows. Wimbledon Art Studios is a unique creative community based in South West London. With 165 individual studios providing a professionally managed creative environment for over 200 artists, it is the largest single site art studio complex in Great Britain.

Exhibiting artists range from the newest emerging talent from the UK's leading art colleges to established, award-winning creatives working in disciplines including painting, sculpture, ceramics, textiles, photography, printmaking and furniture design.

Entry is free and acquisitions and commissions are exempt from gallery premiums. The studios are open for private view between 6pm and 10pm on Thursday 24th November, 2pm-10pm Friday 25th November and 11am-6pm on Saturday 26th and Sunday 27th November.

**Wimbledon Art Studios,**  
Riverside Yard, Riverside Road,  
Earlsfield, London, SW17 0BB



Jilly Vainer



David Gifford

# Saltaire Arts Trail 2012 – Call for Artists / Makers

Applications are invited for the Saltaire Arts Trail 2012, the annual visual arts festival showcasing high quality contemporary art and craft in the UNESCO World Heritage Village of Saltaire, West Yorkshire.

Since its creation five years ago, Saltaire Arts Trail has attracted over 200 makers and contemporary art practitioners and has provided opportunities to exhibit and sell work in more than 40 venues across the village. These include the Makers Fair and Open Houses in Saltaire's famous terraced homes.



Saltaire  
Arts  
Trail

The new Selection Panel for 2012 will include Angie Boyer, Editor of craft&design Magazine, with other judges to be announced on the website soon.

Full application details will be announced in December. To be one of the first to hear, sign up to the [mailing list](#) or visit [www.saltaireartstrail.co.uk](http://www.saltaireartstrail.co.uk)

## Can You Help?



Many of you will know me from our magazine where I write features and look after any PR. However, in addition I've just started working with government-appointment agency NIACE to help assess the current situation in craft. A huge part of what I am doing is collecting stories from current craftsmen and women but I need the information to cover ALL disciplines and as much of the country as possible. Rather than me phone individuals and (as is always the way) choose the most inconvenient time, I'm hoping that you will contact me - either by phone or email - at a time that suits you.

The information I need from as many craft practitioners as possible is:

**Name:**

**Location:** *(Where you are based)*

**Discipline:** *(General description of your craft)*

**How long you have been working as a craft practitioner:**

**Please describe briefly how you learned your craft:**

*Detail any training courses you have attended (these can be accredited or non-accredited, from half-day workshops through to degree courses)*

**Advise any courses which you would like to have access to**  
*(include any that may have been discontinued)*

**State how/where your work is sold:** *(ie website, galleries, etc)*

**Alternative career information** *(if applicable):*

*This may be a former career or paid work you currently do to boost your income*

You can either email the information through to me *(copy the text above and paste it into the body of an email then answer each question)* and send to [jan@craftanddesign.net](mailto:jan@craftanddesign.net), in which case please also give me a contact number in case I need to clarify anything or just email with the best time to call and a number you can be reached on.

This is the most major project that's taken in place in crafts for decades so I really hope that you can spare five or ten minutes to be part of it.

Thanks everyone for your help,

**Jan Lasnon**



**Phil Barnes - Master Enameller.**  
**Read his story along with many more top makers in the next issue of craft&design on sale 15 December**



## Let's Keep in Touch

Don't forget you can keep up-to-date with what we're doing, and let us know what's going on in your area all month round with our

Read our blog  
 our **Facebook page**  
 or follow us on **Twitter**



## And finally...

A subscription to our magazine is a great Christmas gift idea that will last all year. Order using our secure ordering facility to **subscribe online** or, if you prefer, call us on 01377 255213 with your card details. Our Jan/Feb '12 issue goes on sale on 15th December 2011 and we'll be following up our interview with John Hayes MP with news of who is handling the government's craft mapping exercise and ways that our readers can get involved by telling their own individual stories. It's a great chance to highlight things that could have made life easier or, could make a difference today.

# INTRODUCTORY STAINED GLASS WORKSHOP



## Emma Blount - Stained Glass Artist

Would you like to try your hand at making a traditional leaded light window or object? Make something bright and colourful on a dark January weekend under the watchful eye of an award winning stained glass artist? Or just spend "time for me" doing something you've never done before?

We'll sign up for a course by emailing [emmablount@yahoo.co.uk](mailto:emmablount@yahoo.co.uk) or calling 07790273519  
 Monday evening classes 6pm - 9pm from 9th January 2012: 10 weeks cost £360 Areas covered; design, template making, glass cutting, leading, soldering Possibly glass painting, depending on attendees' requirements  
 A maximum of 6 people per class; Venue; Lead & Light, 35A Hartland Road, Camden, London, NW1 8DB